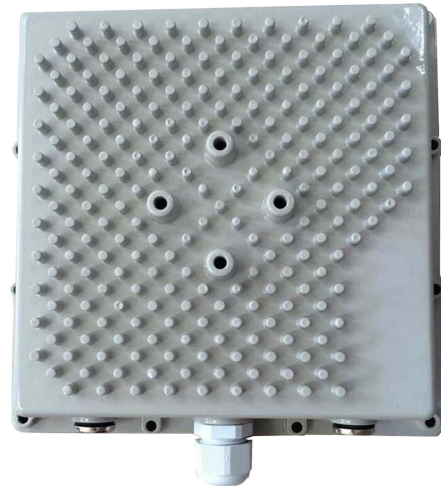




## Integrated circuit board mounting cavity



Tip: Pictures are for reference only.  
Please refer to physical objects.

Tip: Pictures are for reference only.  
Please refer to physical objects.

Specifications	
Model	WB003
Out-Dimension-MM	About 218×218×66
In-Dimension-MM	About 180×180×37
Connector	2×N+1×PG16
Weight-KG	About 1.5
Cavity Material	Aluminium alloy
Cavity Color	Gray
Cover Plate Material	Aluminium alloy
Cover Plate Color	Gray
Mechanical tilt-°	0 to 60
Protection Degree	IP67
Operating Temperature-°C	-40 to 60
Storage Temperature-°C	-55 to 85
Relative Humidity-%	5 to 95
Rated Wind Velocity-M/S	60
Mounting way	Mast
Mast Diameter-MM	Φ30 t0 50