



Directional Sector Antenna



- Model: FTD-2458SH1416DP90AC
- Name: Directional Sector Antenna
- Freq.Range: 2400 to 2500 / 5150 to 5850 MHz
- Communications system:
2.4/5.8GHz WALN/WIFI/ISM/UNII,
Spread Spectrum Communication
- Application scenario:
Point to multipoint, Base station antenna,
Outdoor signal directional coverage,
Wireless data and image transmission,
Public wireless hotspot coverage,
IEEE802.11a/b/g/n

Tip: Pictures are for reference only.
Please refer to physical objects.

Electrical Specifications

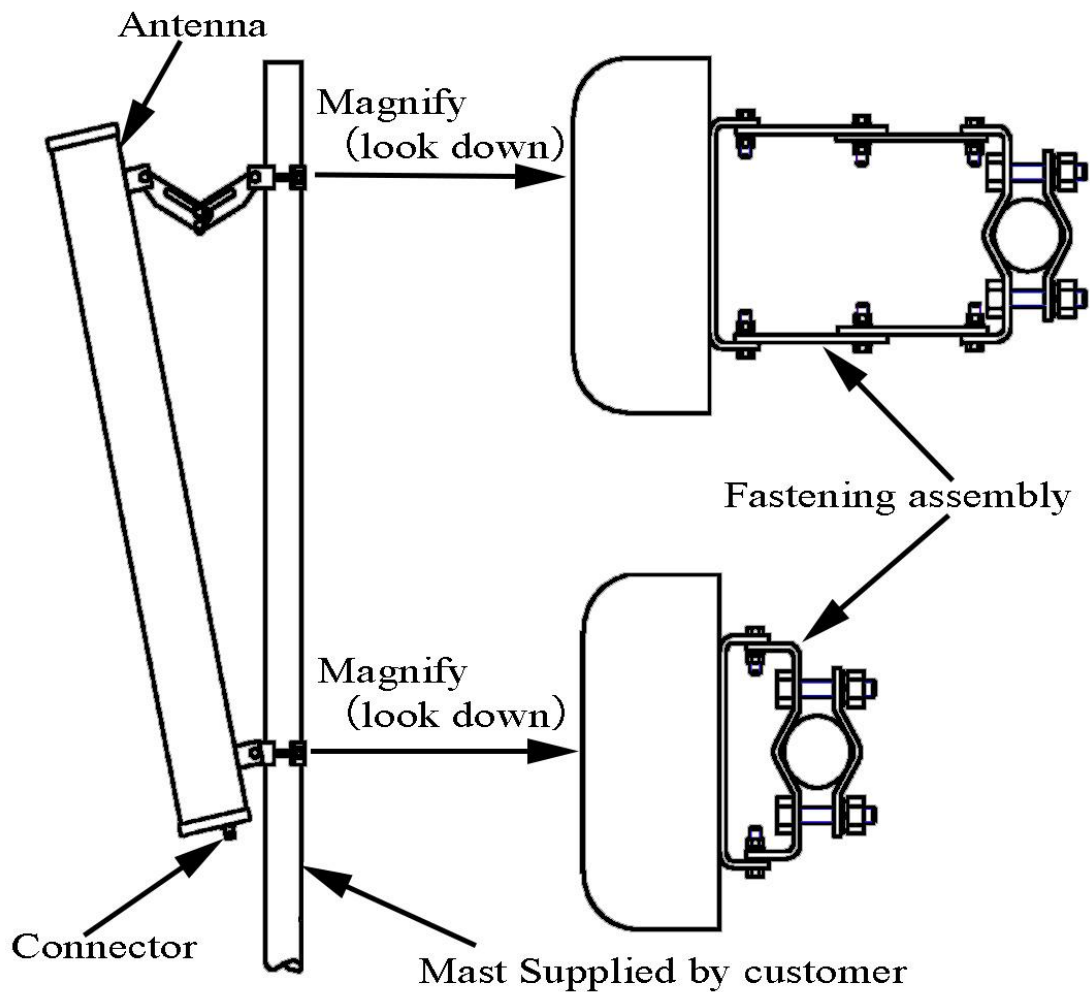
Freq.Range-MHz	2400 to 2500	5150 to 5850
Bandwidth-MHz	100	700
Polarization	±45°	
Gain-dBi	14	16
Beam Electrical Downtilt-°	0	
Half-power beam width-°	H:88 E:15	H:88 E:7.5
Cross-pol-isolation-dB	≥ 25	
F/B-dB	≥ 20	
Impedance-Ω	50	
VSWR	≤ 1.5	≤ 2.0
Max.Power-W	50	
Lightning Protection	DC Grounded	

Mechanical Specifications

Connector	2×N female
Connector Position	Bottom
Dimension-MM	About 500×167×55
Weight-KG	About 2.1
Radome material	UPVC
Radome color	Gray
Mechanical tilt-°	0 to 10
Operational Temperature-°C	-40 to 60
Storage Temperature-°C	-55 to 85
Relative Humidity-%	5 to 95
Rated Wind Velocity-M/S	60
Mounting way	Mast
Mast Diameter-MM	Φ50 to 75



Installation Demonstrations



Typical pattern & Communication channel

2400~2500MHz

5150~5850MHz

