



# Directional Sector Antenna



- Model: FTD-2458SH1215VH65AC
- Name: Directional Sector Antenna
- Freq.Range: 2400 to 2500 / 5150 to 5850 MHz
- Communications system:  
2.4/5.8GHz WALN/WIFI/ISM/UNII,  
Spread Spectrum Communication
- Application scenario:  
Point to multipoint, Base station antenna,  
Outdoor signal directional coverage,  
Wireless data and image transmission,  
Public wireless hotspot coverage,  
IEEE802.11a/b/g/n

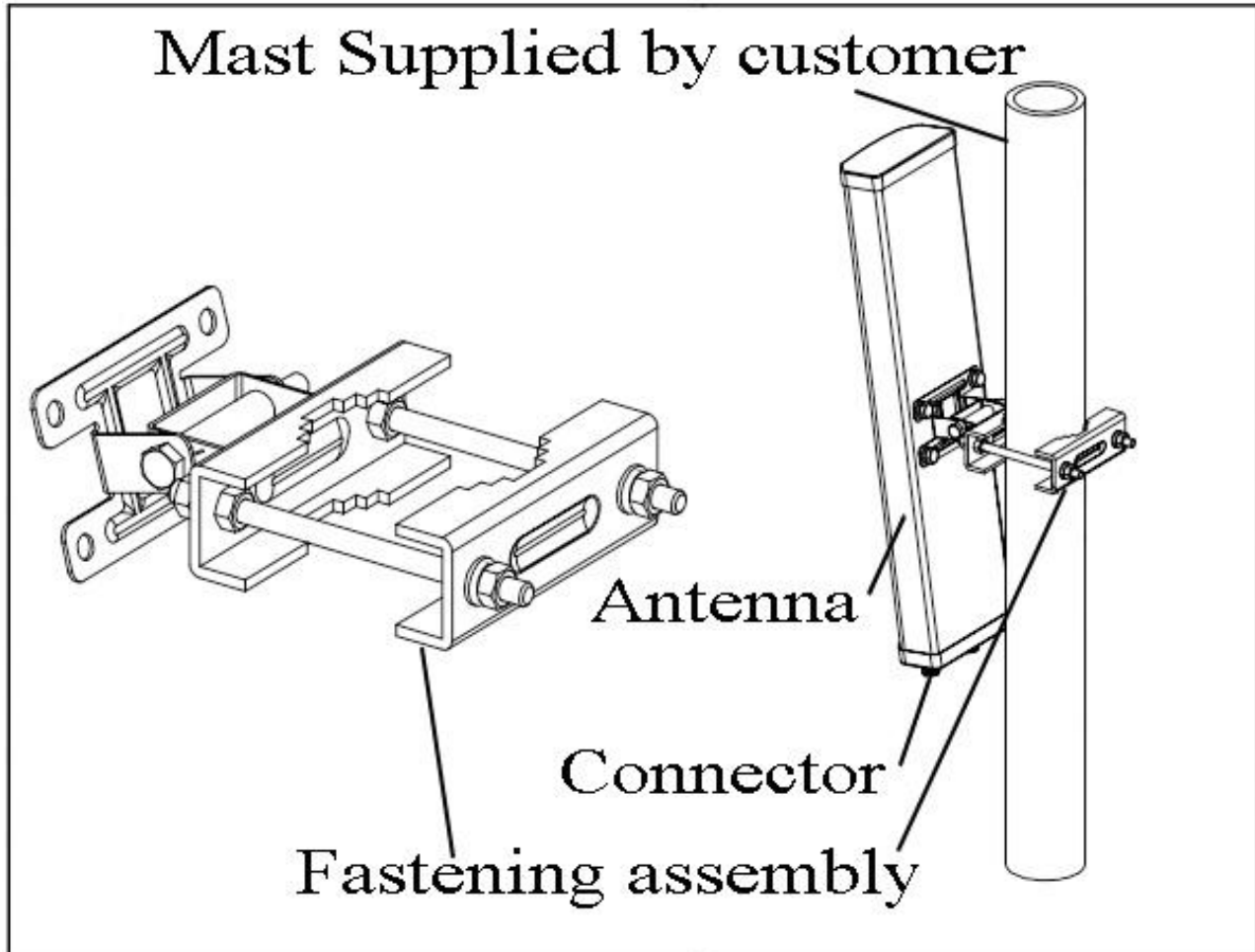
Tip: Pictures are for reference only.  
Please refer to physical objects.

| Electrical Specifications  |                         |              |
|----------------------------|-------------------------|--------------|
| Freq.Range-MHz             | 2400 to 2500            | 5150 to 5850 |
| Bandwidth-MHz              | 100                     | 700          |
| Polarization               | Vertical and Horizontal |              |
| Gain-dBi                   | 11.5                    | 14.5         |
| Beam Electrical Downtilt-° | 0                       |              |
| Half-power beam width-°    | H:65 E:30               | H:65 E:12    |
| Cross-pol-isolation-dB     | ≥ 25                    |              |
| F/B-dB                     | ≥ 20                    |              |
| Impedance-Ω                | 50                      |              |
| VSWR                       | ≤ 1.5                   | ≤ 2.0        |
| Max.Power-W                | 50                      |              |
| Lightning Protection       | DC Grounded             |              |

| Mechanical Specifications  |                  |
|----------------------------|------------------|
| Connector                  | 2×N female       |
| Connector Position         | Bottom           |
| Dimension-MM               | About 250×167×55 |
| Weight-KG                  | About 1.3        |
| Radome material            | UPVC             |
| Radome color               | Gray             |
| Mechanical tilt-°          | 0 to 30          |
| Operational Temperature-°C | -40 to 60        |
| Storage Temperature-°C     | -55 to 85        |
| Relative Humidity-%        | 5 to 95          |
| Rated Wind Velocity-M/S    | 60               |
| Mounting way               | Mast             |
| Mast Diameter-MM           | Φ35 to 75        |



## Installation Demonstrations



## Typical pattern & Communication channel

2400~2500MHz

5150~5850MHz

