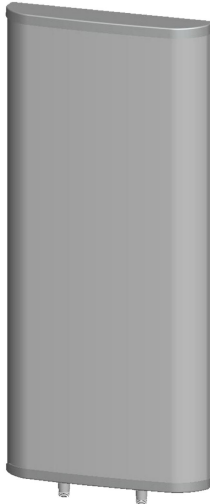




## Directional Sector Antenna



- Model: FTD-06SH15DP65B
- Name: Directional Sector Antenna
- Freq.Range: 606 to 678 MHz
- Communications system: DTTB,  
Wireless digital television system
- Application scenario: Point to multipoint,  
Repeater antenna, Base station antenna,  
Outdoor signal directional coverage,  
Mobile Video, Remote communication

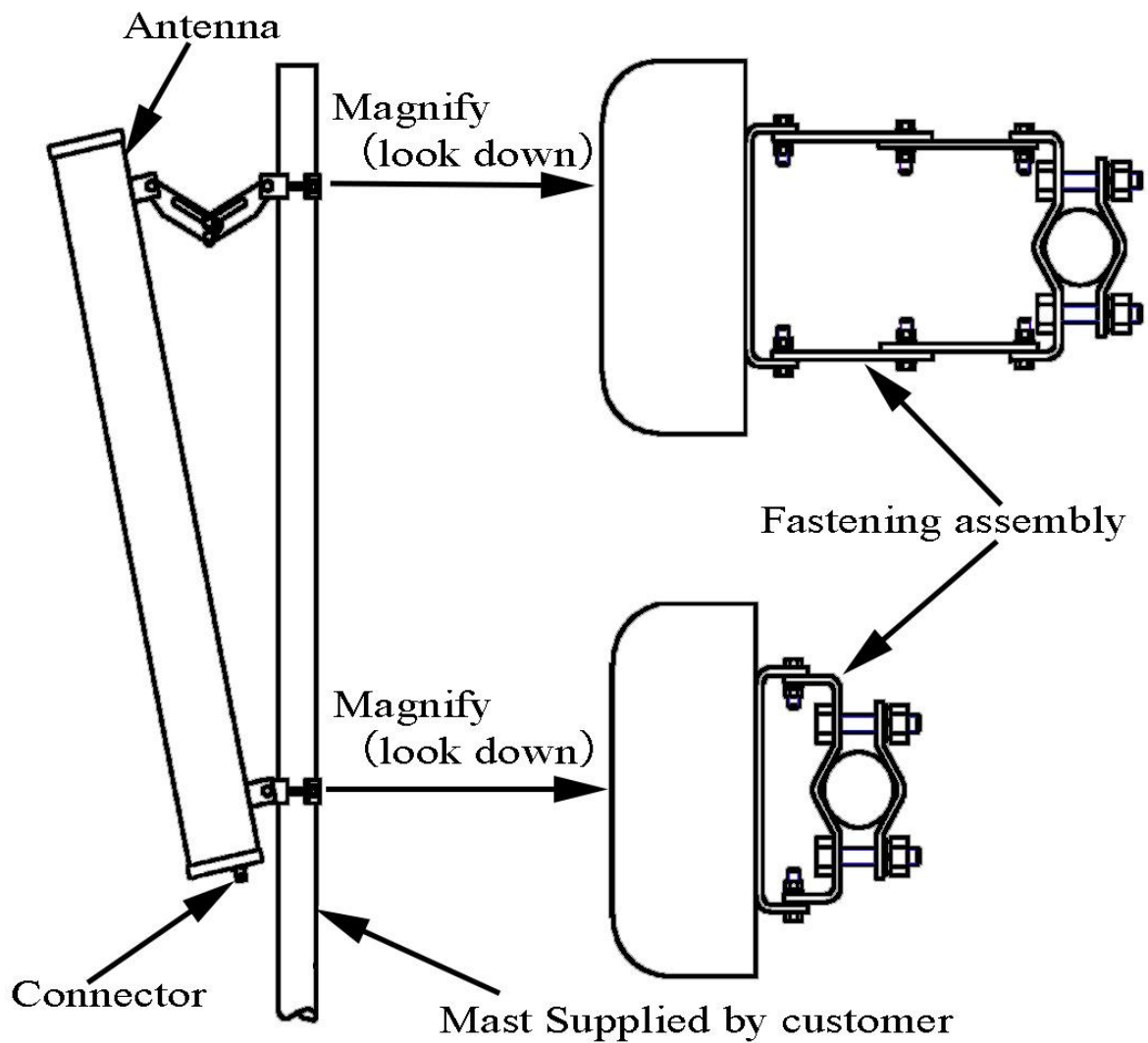
Tip: Pictures are for reference only.  
Please refer to physical objects.

Electrical Specifications	
Freq.Range-MHz	606 to 678
Bandwidth-MHz	72
Polarization	$\pm 45^\circ$
Gain-dBi	15
Beam Electrical Downtilt- $^\circ$	0
Half-power beam width- $^\circ$	H:65      E:15
F/B-dB	$\geq 20$
Cross-pol-isolation-dB	$\geq 25$
Impedance- $\Omega$	50
VSWR	$\leq 1.5$
Max.Power-W	300
Lightning Protection	DC Grounded

Mechanical Specifications	
Connector	2 $\times$ N female
Connector Position	Bottom
Dimension-MM	About 1650 $\times$ 320 $\times$ 80
Weight-KG	About 13
Radome material	UPVC
Radome color	Gray
Mechanical tilt- $^\circ$	0 to 10
Operational Temperature- $^\circ$ C	-40 to 60
Storage Temperature- $^\circ$ C	-55 to 85
Relative Humidity-%	5 to 95
Rated Wind Velocity-M/S	60
Mounting way	Mast
Mast Diameter-MM	About $\Phi$ 50 to 75



## Installation Demonstrations



## Typical pattern and Connector

